



MONTHLY MEMBERSHIP PROGRESS REPORT

District 18 L

Results as of: 4/30/2017

GMT: HARVEY WHITLEY

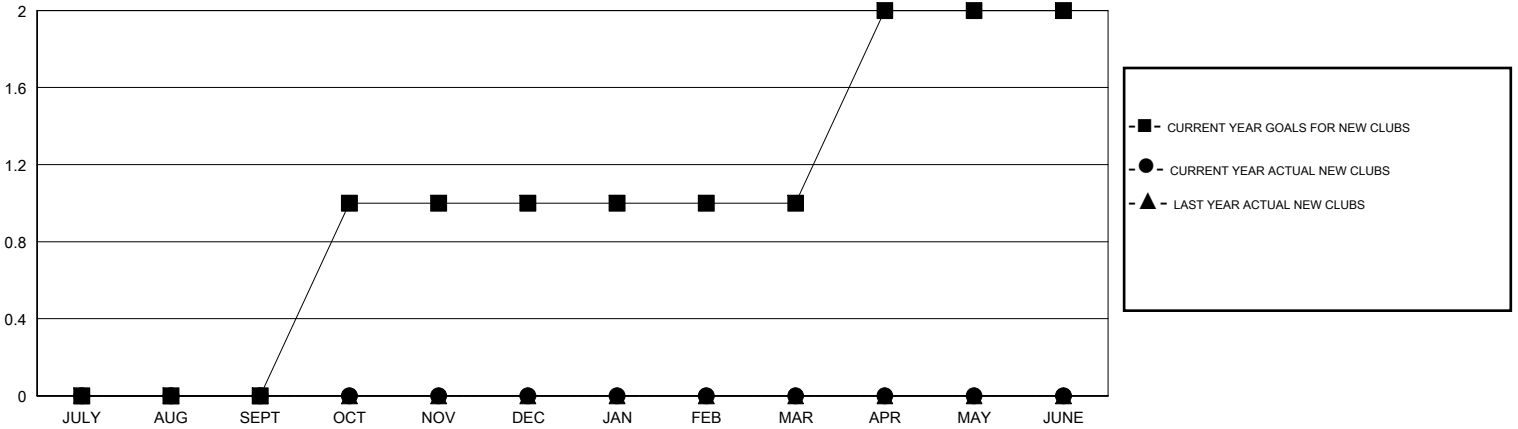
LOCATION GEORGIA

GMT CA

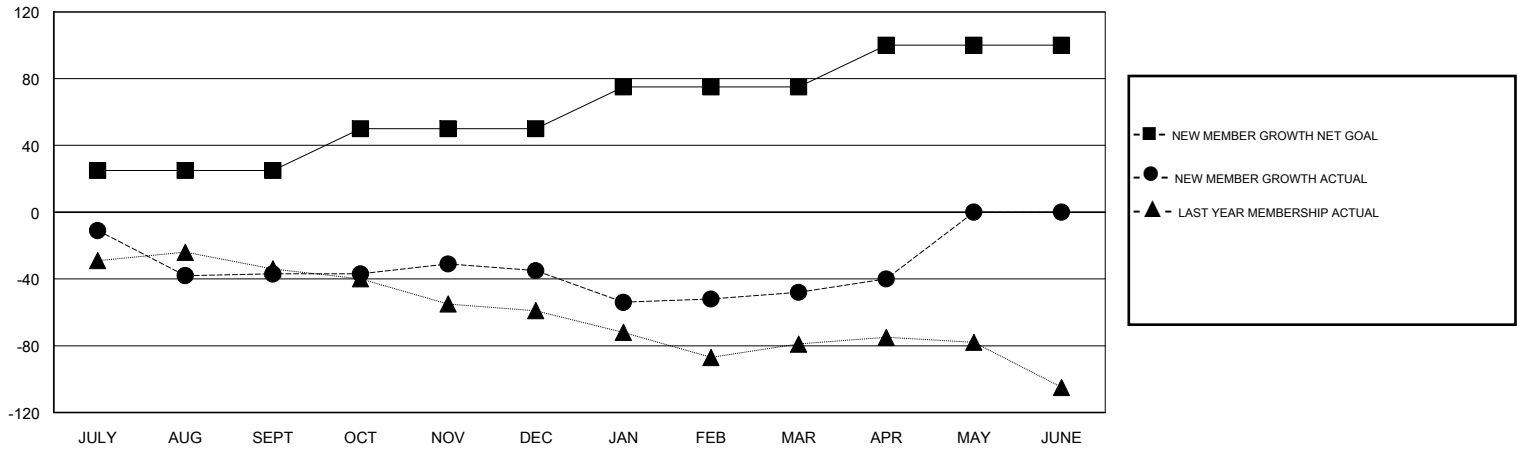
Clubs			
RESULTS FOR 2016-2017			
QUARTER	NEW CLUB GOAL	NEW CLUBS	DROPPED CLUBS
JULY/AUG/SEPT	0	0	0
OCT/NOV/DEC	1	0	0
JAN/FEB/MAR	0	0	0
APR/MAY/JUNE	1	0	0

Members			
RESULTS FOR 2016-2017			
QUARTER	NEW MEMBER GROWTH NET GOAL (not reinstated or transfers)	NEW MEMBER GROWTH ACTUAL (not reinstated or transfers)	DROPPED MEMBERS ACTUAL (including transfers)
JULY/AUG/SEPT	25	59	96
OCT/NOV/DEC	25	19	17
JAN/FEB/MAR	25	31	44
APR/MAY/JUNE	25	13	5

GOALS AND ACTUAL NEW CLUBS CUMULATIVE



GOALS AND ACTUAL MEMBERS CUMULATIVE



DROPPED CLUBS: 0	33 CLUBS OF 48 ADDED 1 OR MORE NEW MEMBERS	<u>GENDER DISTRIBUTION</u>	
DROPPED MEMBERS		MALE	871 (65.19%)
DECEASED	18	FEMALE	465 (34.81%)
CLUB CANCELLED	0	TOTAL FAMILY UNIT MEMBERS	
OTHER	144	237	
TOTAL	162	FAMILY MEMBERS PAYING HALF DUES	
		122	

[CLICK HERE FOR CUMULATIVE MEMBERSHIP DATA](#)